



# XRT 6868



- ▶ Piston pump of 68 cc/rev + 68 cc/rev
- ▶ 2 x 5 pistons design
- ▶ Innovative plate - barrel synchronisation
- ▶ Use of materials with high mechanical resistance
- ▶ Reinforced sealing
- ▶ High global efficiency
- ▶ Compact size
- ▶ Inlet fitting supplied with the pump
- ▶ Low noise level
- ▶ Flange and shaft for truck application according to DIN ISO 14 / NF E22-131
- ▶ High self-priming speed
- ▶ Possible mounting on engine PTO with BPT by-pass valve

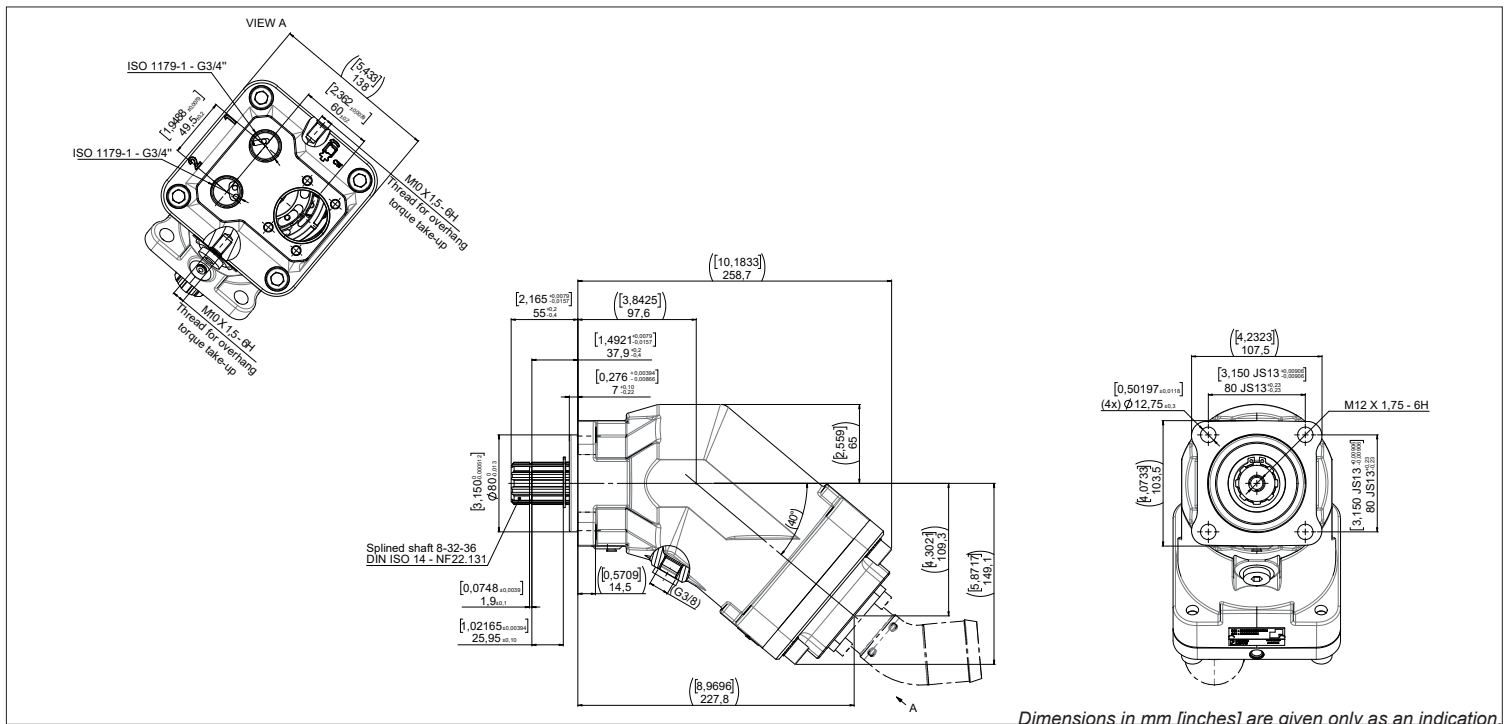
### ▶ Technical characteristics :

Reference	Direction of rotation	Displacement (cc/rev)	Max. continuous pressure (bar)	Maximum intermittent peak pressure < 5 seconds (bar)	Max. speed <sup>(1)</sup> (rpm)	Max. absorbed torque at 380 bar <sup>(2)</sup> (N.m)	Weight		Overhang torque	
							Without inlet fitting (kg)	With inlet fitting 2" (kg)	Without inlet fitting (N.m)	With inlet fitting 2" (N.m)
XRT 6868_P002784	Right (CW)	68 + 68,2	380	420	1400	823	18,7	193	23,8	24,6

(1) At absolute pressure 1 bar, ISO VG46 fluid at 25°C.

(2) Total theoretical torque on both ports.

### ▶ Dimensions in mm [inches] :



For further information, please contact Customer Service (+33(0)3 83 76 77 40).

Dimensions in mm [inches] are given only as an indication.



[www.hydroleduc.com](http://www.hydroleduc.com)

**HYDRO LEDUC SAS**  
Siège social & Usine  
Head Office and Factory  
BP 9  
F-54122 AZERAILLES  
FRANCE  
Tel. +33 (0)3 83 76 77 40  
Fax +33 (0)3 83 75 21 58

**HYDRO LEDUC GmbH**  
Am Ziegelplatz 20  
D-77746 SCHUTTERWALD  
DEUTSCHLAND  
Tel. +49 (0) 781-9482590  
Fax +49 (0) 781-9482592

**HYDRO LEDUC AB**  
Betongvägen 11  
461 38 TROLLHÄTTAN  
SWEDEN  
Tel. +46 (0) 520 10 820

**HYDRO LEDUC BV**  
Ericssonstraat 2  
5121 ML Rijen  
The Netherlands  
Tel. +31 6 202 40 651

**HYDRO LEDUC N.A. Inc.**  
Grand Parkway Industrial Park  
23549 Clay Road  
KATY, TX 77493  
USA  
Tel. +1 281 679 9654