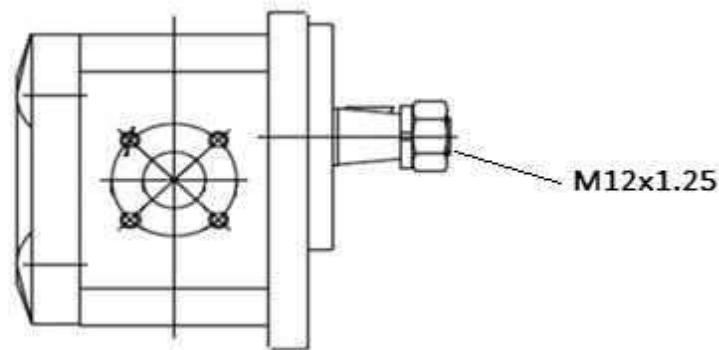
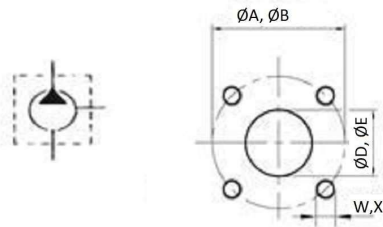
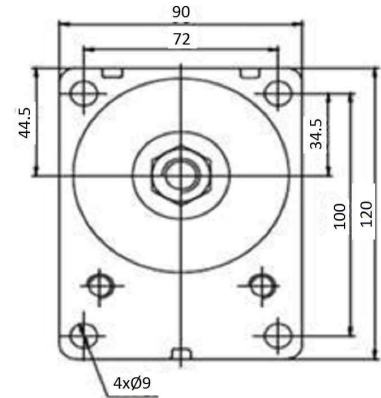
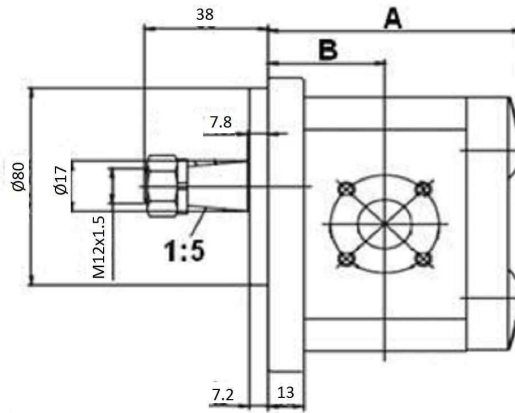


Gear pumps

Gear pumps Group II Right

## Gr. II Gear pump/Bosch flange/Tapered shaft 1:5 /Side ports German type

Page: 1/2



**Pressure:** ØE = 15 ; X = M6

**Rotation reference:** BTD...I=Rotation left  
 BTD...D=Rotation right  
 Min 500 rpm

**Flange and cover:** Cast iron

Part n°	Ø (mm)	Ø (mm)	Max. Press. (bar)	Max. Peak press.	R.P.M. Max	cm <sup>3</sup> / rev	ØA	ØB	ØD	A	B	W
<b>BTD260D04</b>	40	35	250	300	3500	6	40	35	15	99	45	M6
<b>BTD280D04</b>	40	35	250	300	3500	8	40	35	20	102	46,5	M6
<b>BTD2120D04</b>	40	35	250	300	3500	12	40	35	20	108	49,5	M6
<b>BTD2140D04</b>	40	35	250	300	3500	14	40	35	20	111	51	M6
<b>BTD2160D04</b>	40	35	250	300	3500	16	40	35	20	114	52,5	M6
<b>BTD2200D04</b>	40	35	250	300	3500	20	40	35	20	121	56	M6
<b>BTD2230D04</b>	40	35	200	250	3000	23	40	35	20	125,5	58,3	M6

Gear pumps

Gear pumps Group II Right

## Gr. II Gear pump/Bosch flange/Tapered shaft 1:5 /Side ports German type

Page: 2/2

Part n°	Ø (mm)	Ø (mm)	Max. Press. (bar)	Max. Peak press.	R.P.M. Max	cm <sup>3</sup> / rev	ØA	ØB	ØD	A	B	W
<b>BTD2250D04</b>	40	35	200	250	3000	25	40	35	20	128	59,5	M6
<b>BTD2280D04</b>	40	30	160	200	3000	28	40	30	20	133	62	M8

ØA, ØD, W = Inlet  
ØB, ØE, X = Outlet  
Tightening torque 45-50 Nm